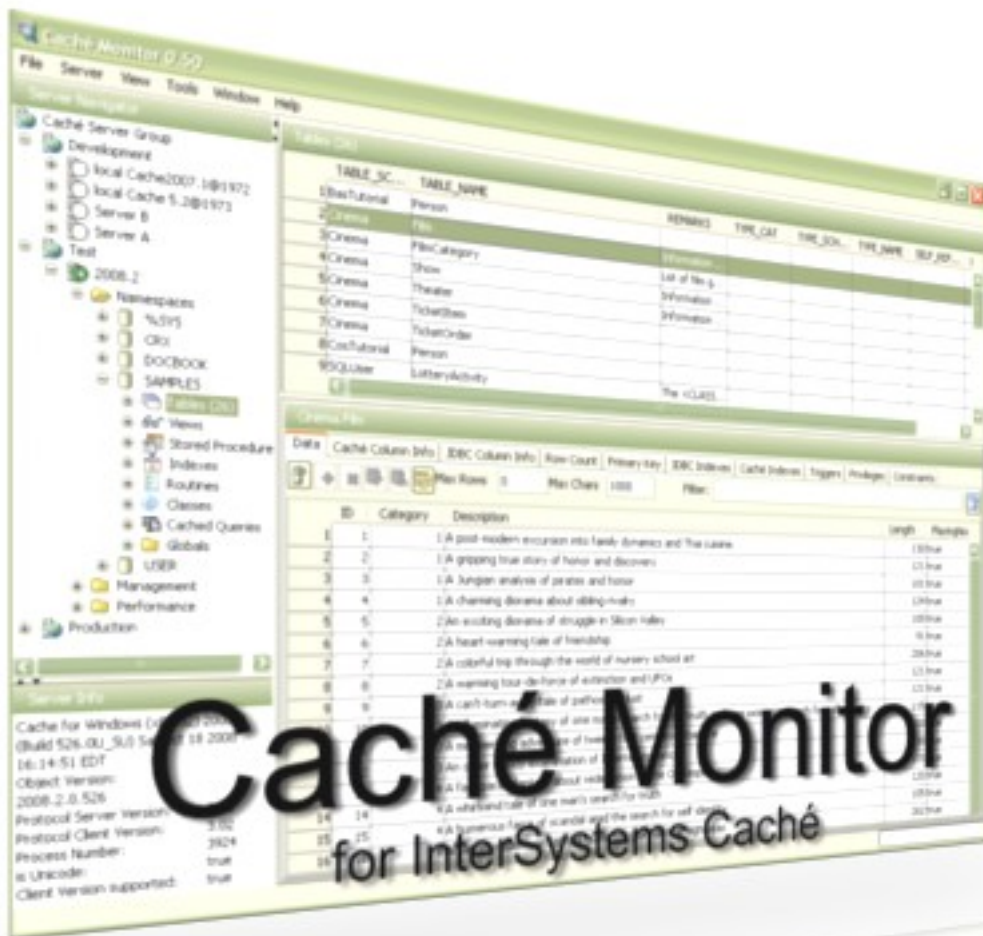


Caché Monitor is an lightweight integrated environment for accessing, configuring, managing, and administering many components of InterSystems database Caché. Caché Monitor combines tools with a smart sql editor to provide easy access for Caché developers and administrators to the database.

Caché Monitor is FREEWARE and can be used from any platform with an JAVA 6 environment (1.6) (Windows, Linux, Apple Mac)



Features

- Handles multiple connections.
- Asynchronous database communication
- Server Navigator
- Object Explorer
- Query Analyzer

Fast [SQL Query Editor \(SQL Query Analyzer\)](#) for creating SQL queries with Color coding of Caché SQL keywords to minimize syntax and spelling errors (Syntax highlighting).

Caché-SQL

Code completion

provide context sensitiv information about database objects (Tables,Views,Columns and Indexes), also known as Intellisense. SQL Code formatting. The graphical SQL execution plan uses icons to represent the execution of statements and sql queries in InterSystems Cachè. This graphical approach is very useful for understanding the performance characteristics of a sql query.

- SQL History

Caché Monitor automatically saves every SQL statement executed against InterSystems Caché. These statements can be searched and recalled.

- Tools / Performance Management

- Tool to analyze performance by identifying slowly executing queries



~~... Caché Monitor ... [here](#) ...~~